



1. Elijah Morning prayer will be from 1/3-1/7 at 5AM and 1/8 at 5:30AM. (Online only for Church School Students)
2. In 2022, we will continue to read the whole bible. Bible reading chart will be sent home monthly. Teachers will check their reading chart last Sunday of the month
3. Kids QTin starts this year 2022! The chart will be sent home as well. As the whole family does QTin, not only you can collect points for award store, but we also pray it blesses each family and grows together in God.  
\*\*\*(Students will collect points according to their bible reading and QTin charts.)
4. Collect Sunday bulletin! There are a few bible related questions each week. These questions and bible sermon notes will help you to prepare the Golden Bell Bible Quiz which will be every 3 months.

## BETHEL CHURCH SCHOOL

# JR. ELEMENTARY

**SERVICE TIME: 2ND: 9AM/ 3RD: 11AM**

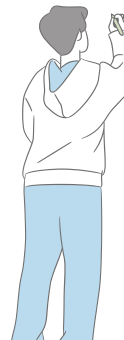
### MEMORY VERSE

That person is like a tree planted by streams of water, which yields its fruit in season and whose leaf does not wither—whatever they do prospers.

Psalm 1:3

### UPCOMING EVENT

- |          |                       |
|----------|-----------------------|
| 1/2      | AWANA game            |
| 1/3- 1/8 | Elijah Morning Prayer |



01  
02  
2022

# SERMON NOTES

SPEAKER: Pastor Daniel Hyeon

TITLE: Hebrews: Be Faithful unto Jesus Christ

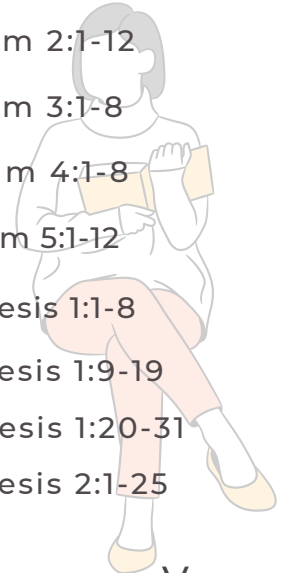
PASSAGE: Hebrews 11:6



How can you apply to your life?

# BIBLE READING

|           |       |                 |
|-----------|-------|-----------------|
| SUNDAY    | 01/02 | Psalms 2:1-12   |
| MONDAY    | 01/03 | Psalms 3:1-8    |
| TUESDAY   | 01/04 | Psalms 4:1-8    |
| WEDNESDAY | 01/05 | Psalms 5:1-12   |
| THURSDAY  | 01/06 | Genesis 1:1-8   |
| FRIDAY    | 01/07 | Genesis 1:9-19  |
| SATURDAY  | 01/08 | Genesis 1:20-31 |
| SUNDAY    | 01/09 | Genesis 2:1-25  |



## Next Week(01/09) Memory Verse

And the Egyptians will know that I am the Lord when I stretch out my hand against Egypt and bring the Israelites out of it.  
Exodus 7:5

# BIBLE QUESTIONS

Q1: Why did Moses flee from Egypt?  
(Exodus 2:11-15)

Q2: Who was Moses' father-in-law and what was his position?(Exodus 3:1)

A1: Because it was known that he had killed an Egyptian who mistreated an Israelite.  
A2: Jethro, priest of Midian

01  
02  
2022