



1. This Sunday 1/9 will be online service only. We hope to see you next Sunday at church.
2. In 2022, we will continue to read the whole bible. Bible reading chart will be sent home monthly. Teachers will check their reading chart last Sunday of the month
3. Kids QTin starts this year 2022! The chart will be sent home as well. As the whole family does QTin, not only you can collect points for award store, but we also pray it blesses each family and grows together in God.
*** (Students will collect points according to their bible reading and QTin charts.)
4. Collect Sunday bulletin! There are a few bible related questions each week. These questions and bible sermon notes will help you to prepare the Golden Bell Bible Quiz which will be every 3 months.

BETHEL CHURCH SCHOOL

JR. ELEMENTARY

SERVICE TIME: 2ND: 9AM/ 3RD: 11AM

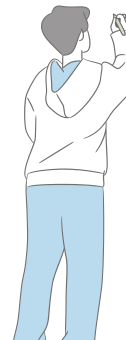
MEMORY VERSE

For the Lord watches over the way of the righteous, but the way of the wicked leads to destruction.

Psalm 1:6

UPCOMING EVENT

- | | |
|----------|-----------------------|
| 1/2 | AWANA game |
| 1/3- 1/8 | Elijah Morning Prayer |



01
09
2022

SERMON NOTES

SPEAKER: Pastor Daniel Hyeon

TITLE: Hebrews: Sermon of Moses

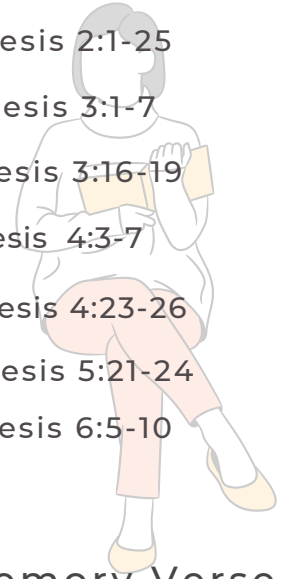
PASSAGE: Deuteronomy 6:4-7



How can you apply to your life?

BIBLE READING

| | | |
|-----------|-------|-----------------|
| SUNDAY | 01/09 | Genesis 2:1-25 |
| MONDAY | 01/10 | Genesis 3:1-7 |
| TUESDAY | 01/11 | Genesis 3:16-19 |
| WEDNESDAY | 01/12 | Genesis 4:3-7 |
| THURSDAY | 01/13 | Genesis 4:23-26 |
| FRIDAY | 01/14 | Genesis 5:21-24 |
| SATURDAY | 01/15 | Genesis 6:5-10 |



Next Week(01/16) Memory Verse

And the Egyptians will know that I am the Lord when I stretch out my hand against Egypt and bring the Israelites out of it.
Exodus 7:5

BIBLE QUESTIONS

Q1: Where did God appear to Moses out of the burning bush?(Exodus 3:1-2)

Q2: What promise did God make to Moses at the burning bush?
(Exodus 3:8-10)

A1: Mount Horeb[Mount Sinai]
A2: The God would rescue the Children of Israel out of Egypt

01
09
2022