



4/26/2020

Bethel Church School

Gloryland

Sermon Title: The Bible Points Toward Jesus

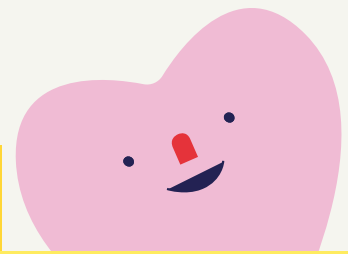
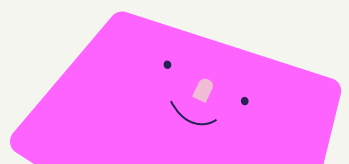
Passage: Luke 24: 13 - 35

Sermon Notes:

1

2

3



WEEK 5/4 - 5/10

BIBLE READING

Mon: Luke 4:11-13

Tue: Luke 4:14-15

Wed: Luke 4:16-17

Thu: Luke 4:18-19

Fri: Luke 4:10-21

Sat: Luke 4:22-23

Sun: Luke 4:24-26

BIBLE MEMORY VERSE

*"If you declare with your mouth,
"Jesus is Lord," and believe in your heart
that God raised him from the dead,
you will be saved."*

Romans 10:9

