



The boy Jesus went back to Nazareth and was obedient to His parents.

Match the letters.

O B E D I E N T

D

O

N

E

B

E

T

I



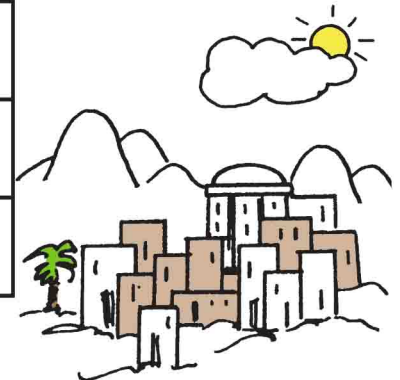
Jesus in the Temple

When Jesus was a boy, He traveled with His family to Jerusalem.

Help the family get to Jerusalem. Follow the numbers.
1-2-3-4-5-6-7-8-9-10-11-12-13



1	2	6	7	
	3		5	
	4	5	6	
			7	
3	1	9	8	
4		10		
2	5	11	12	13



As they started home, Jesus wasn't with them.
They found Him in the temple courts.
Jesus told His parents, "Didn't you know I
would be in My Father's house?"

How many people are in the picture?

4 7 9 12

Then **circle** these things in the picture.

